

Installation Guide for 2005-07 Ford Super Duty PRO-Series LED Tail lights

ALPHAREX specializes in designing and producing superior and uniquely stylish aftermarket automotive performance lighting with unrivalled innovative technology. This installation guide takes you through the step-by-step process of installing your new **ALPHAREX TAIL LIGHTS** for your 2005-07 Ford Super Duty

DO NOT USE DIELECTRIC GREASE!



Table of Contents



PART I REMOVE TAIL LIGHTS

- **INSTALLATION TOOLS**
- **STEP 1.** Remove tail lights bolts
- **STEP 2.** Unplug sockets and remove tail lights
- **STEP 3.** Remove lightbulbs from the sockets

PART II INSTALL ALPHAREX TAIL LIGHTS

- **STEP 1.** Plug the sockets and install tail lights
- **STEP 2.** Complete Installation

Disclaimer: This installation article is a tutorial guide. By reading this article, you agree it is for reference only and AlphaRex USA and its distributors make no guarantee on the finished results. Under no circumstances whatsoever shall AlphaRex USA nor its distributors be liable for any damage, misuse or personal injuries. If you do not fully understand the installation procedure, it is highly recommended that you seek help from professional mechanics to do the installation.

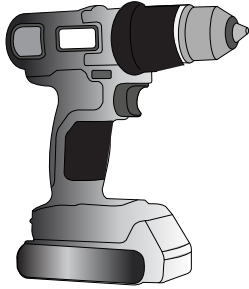
PART I REMOVE TAIL LIGHTS

INSTALLATION TOOLS

PREPARE THESE TOOLS FOR INSTALLATION



Phillips
Screwdriver



Power Tool



1/4 Ratchet



1/4 Extension

8mm



Socket

NOTE: Whenever using a power tool, please make sure do not overtighten the screws.

Whenever working on your vehicle, always make sure your vehicle is OFF and parked.



STEP 1. REMOVE TAIL LIGHTS BOLTS

Begin by opening the trunk and then proceed to unscrew the bolts securing the tail light.



Remove the top and bottom 10mm bolts on each side of the tail lights.

Note: When using a power wrench, ensure not to overtighten the bolts.

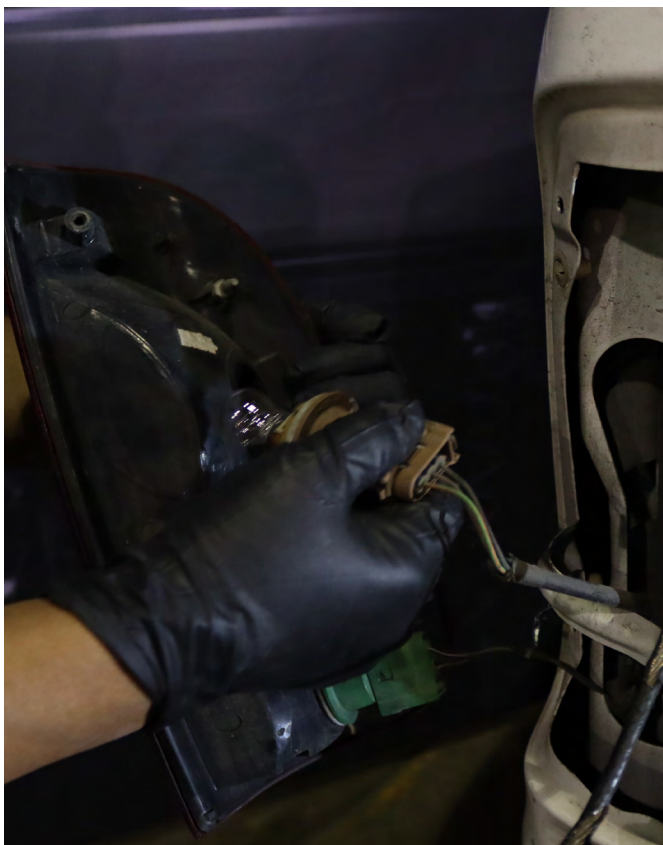


Carefully pull the tail light outward to remove it gently.



STEP 2. UNPLUG SOCKETS AND REMOVE TAIL LIGHTS

Prior to removing the tail lights, unplug the sockets.



STEP 3. REMOVE LIGHTBULBS FROM THE SOCKETS

Before installation, pull out the lightbulbs from each socket and remove them.



Repeat the same steps on the other side to fully remove the tail lights.



PART II INSTALL ALPHAREX TAIL LIGHTS



STEP 1. PLUG THE SOCKETS AND INSTALL TAIL LIGHTS

ALPHAREX tail lights feature a universal mounting bracket for the reverse light. Depending on your vehicle model, it may be necessary to remove the universal bracket for the reverse light plug installation.



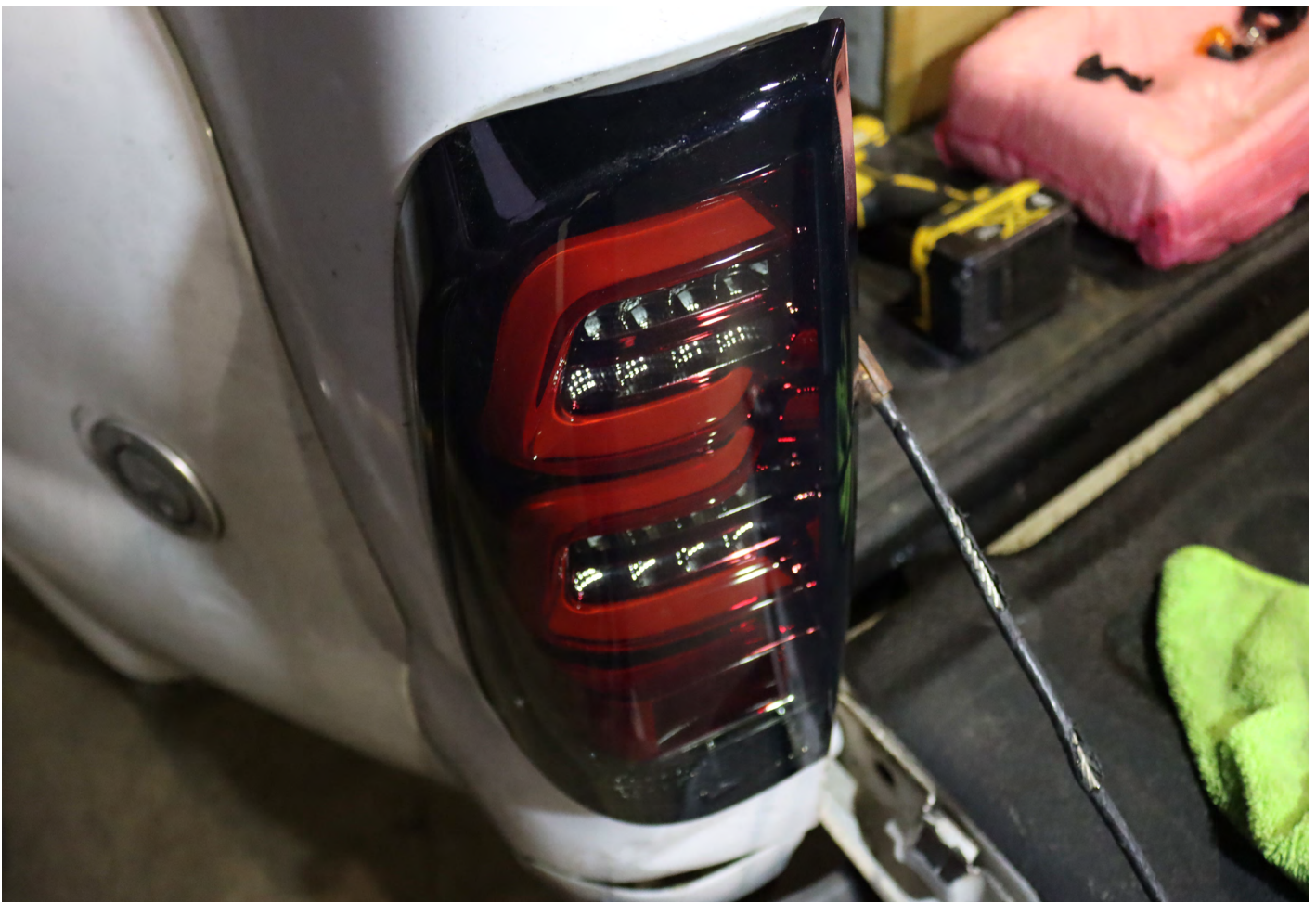
Connect the wire connectors directly into the sockets on the new ALPHAREX tail lights.
DO NOT USE DIELECTRIC GREASE!



Twist and secure the socket into the new tail lights. Reverse the removal process to install the new tail lights into the vehicle.



Utilize a ratchet to tighten the two 8mm bolts on each side.
Note: When using a power wrench, ensure not to overtighten the bolts.



STEP 2. COMPLETE INSTALLATION

Congratulations! You have completed the installation for ALPHAREX **05-07 Ford Super Duty LED TAIL LIGHTS**.

