



Installation Guide for 2011-20 Toyota Sienna Headlights

ALPHAREX specializes in designing and producing superior and uniquely stylish aftermarket automotive performance lighting with unrivalled innovative technology. This installation guide takes you through the step-by-step process of installing your new **ALPHAREX HEADLIGHTS** for your 2011-20 Toyota Sienna

DO NOT USE DIELECTRIC GREASE!



Table of Contents



PART I REMOVE HEADLIGHTS

- **INSTALLATION TOOLS**
- **STEP 1.** Disconnecting the negative battery terminal
- **STEP 2.** Front grille removal
- **STEP 3.** Remove front bumper screws & bolts
- **STEP 4.** Removing front bumper
- **STEP 5.** Remove headlight bolts
- **STEP 6.** Unplug headlight connectors

PART II INSTALL HEADLIGHTS & DRL HARNESS

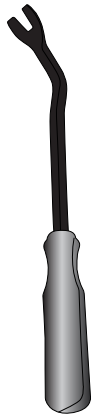
- **STEP 1.** Install ALPHAREX headlights & DRL Harness
- **STEP 2.** Tap the fuse
- **STEP 3.** Run the DRL harness
- **STEP 4.** Plug connectors into the headlight
- **STEP 5.** Screw the headlights bolts
- **STEP 6.** Adjust headlight level
- **STEP 7.** Complete installation

Disclaimer: This installation article is a tutorial guide. By reading this article, you agree it is for reference only and AlphaRex USA and its distributors make no guarantee on the finished results. Under no circumstances whatsoever shall AlphaRex USA nor its distributors be liable for any damage, misuse or personal injuries. If you do not fully understand the installation procedure, it is highly recommended that you seek help from professional mechanics to do the installation.

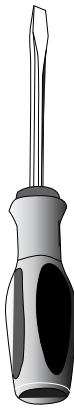
PART I REMOVE HEADLIGHTS

INSTALLATION TOOLS

PREPARE THESE TOOLS FOR INSTALLATION



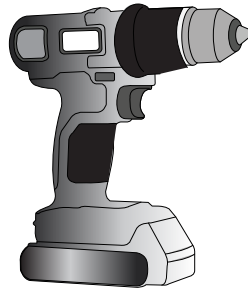
Metal Panel Popper



Flat Screwdriver



Phillips Screwdriver



Power Tool



1/4 Ratchet



1/4 Extension

10mm



Socket

NOTE: Whenever using a power tool, please make sure do not overtighten the screws.

STEP 1. DISCONNECTING THE NEGATIVE BATTERY TERMINAL

Whenever working on your vehicle, always start by disconnecting the negative battery terminal.



STEP 2. FRONT GRILLE REMOVAL

Remove the top mounting push-in pins.



Use a flat-head screwdriver to help release the plastic clips that hold the front grille.



Gently pull the grille outward and set it aside for later reinstallation.



STEP 3. REMOVE FRONT BUMPER SCREWS & BOLTS

Remove the screws on each side near the wheel well.



Use a flat-head screwdriver to remove the plastic tap on each side near the wheel well.



Remove the 10mm bolt on each side near the wheel well.



Use a trim removal tool or flat-head screwdriver to remove the plastic tap on each side of the front bumper.



Remove the 10mm bolts along the bottom of the bumper.



STEP 4. REMOVING FRONT BUMPER

Pull on the side of the bumper, using a small flat-head screwdriver to help release the clips. Follow the same procedure for the other side of the bumper.



Loosen the front bumper cover and, if equipped, unplug the fog light wires. Carefully remove the front bumper completely and set it aside for later reinstallation.



STEP 5. REMOVE HEADLIGHT BOLTS

Remove the bolts securing the headlight. Repeat the same process for the other side.





STEP 6. UNPLUG HEADLIGHT CONNECTORS

Gently pull outward and unplug the connectors to remove the headlight. Follow the same process for the other side.



PART II INSTALL HEADLIGHTS & DRL HARNESS

STEP 1. INSTALL ALPHAREX HEADLIGHTS & DRL HARNESS

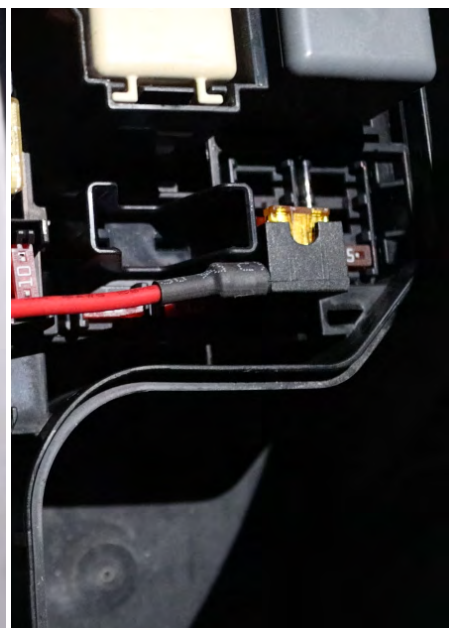
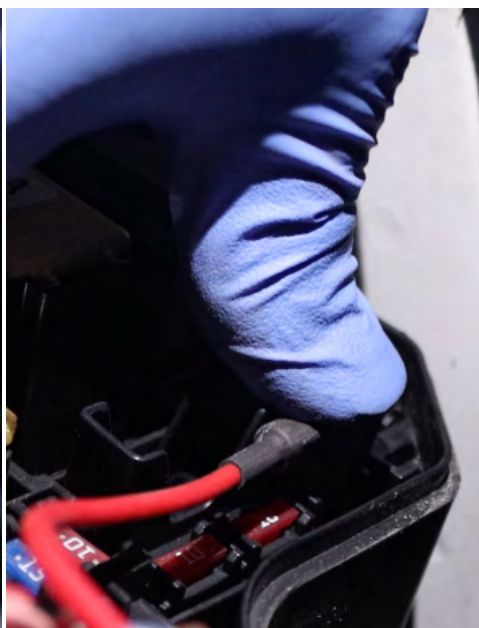
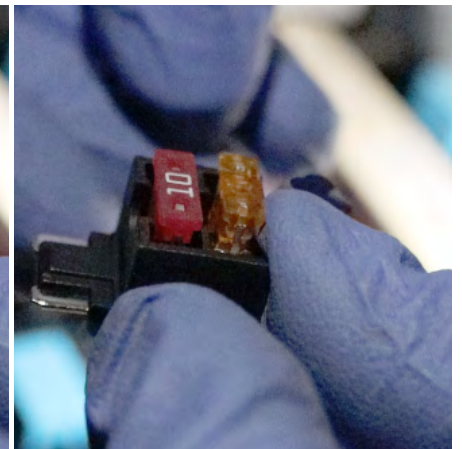
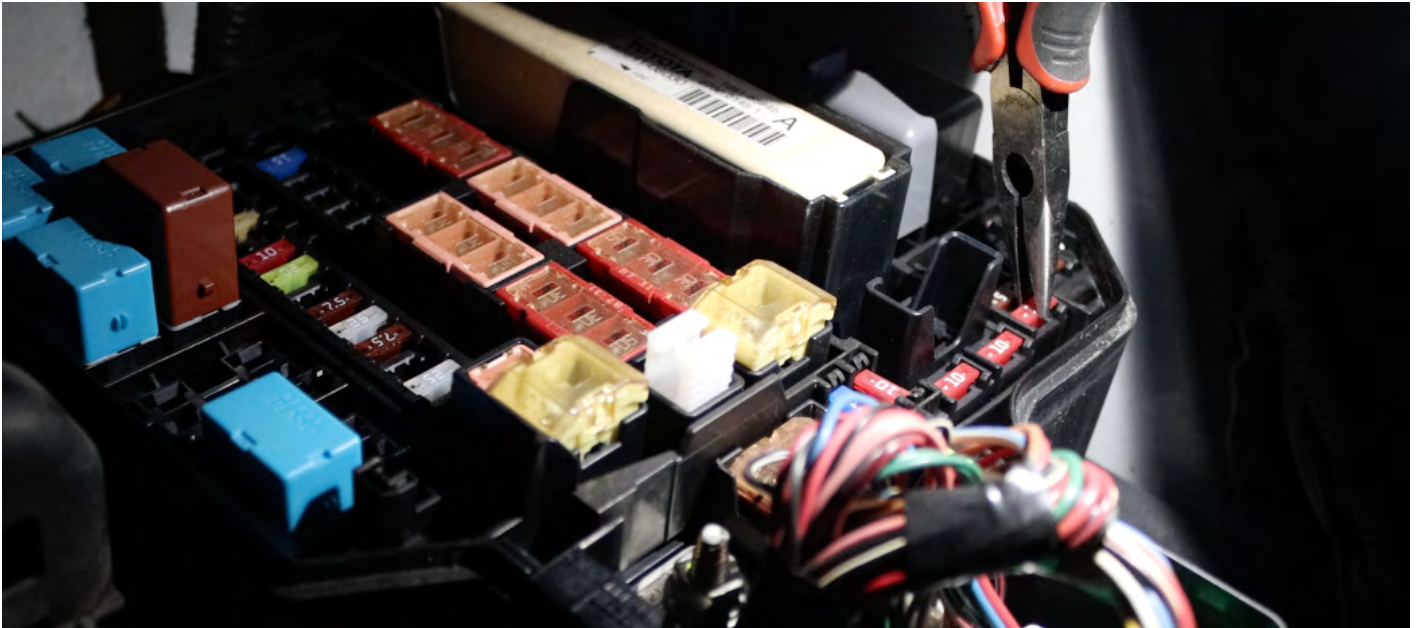


With both headlights disconnected, it's time to install the DRL harness. Connect the red wire to the battery's positive terminal, and the black wire to the battery's negative terminal or the 10mm bolts on the firewall.



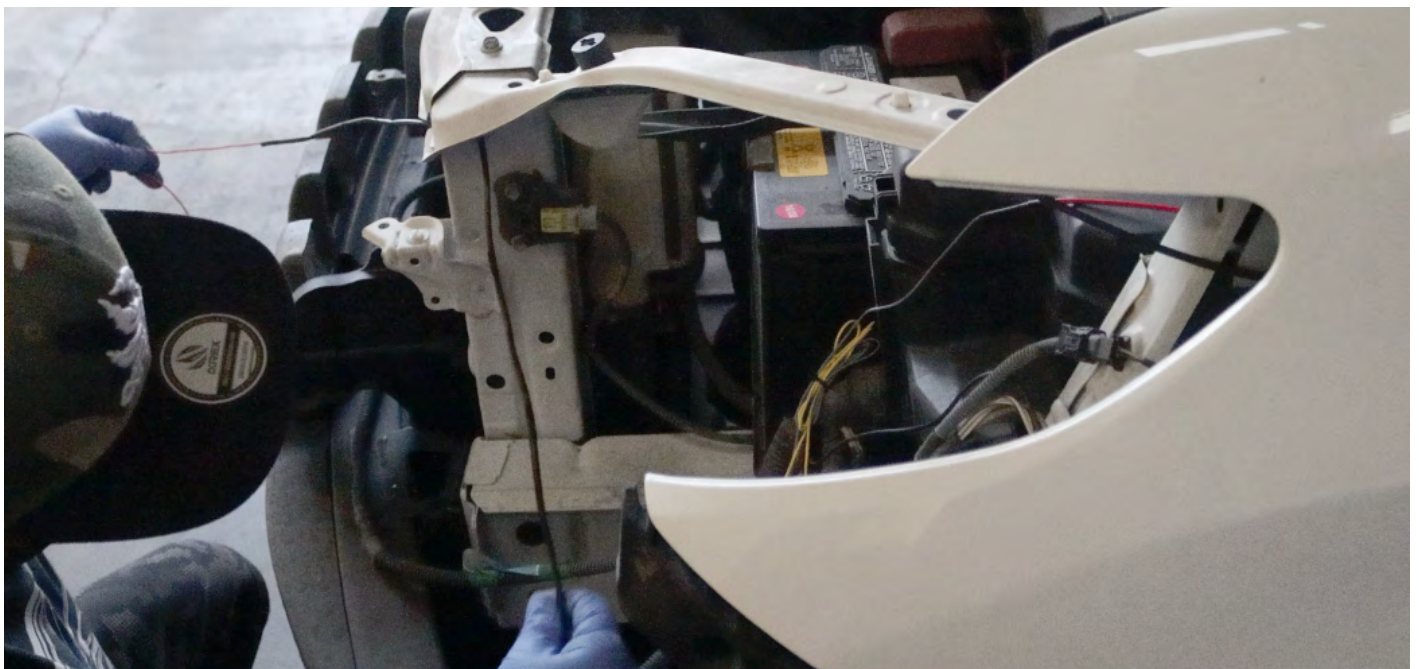
STEP 2. TAP THE FUSE

To enable the DRL to function during the day, tap the grey wire into the 10A fuse.



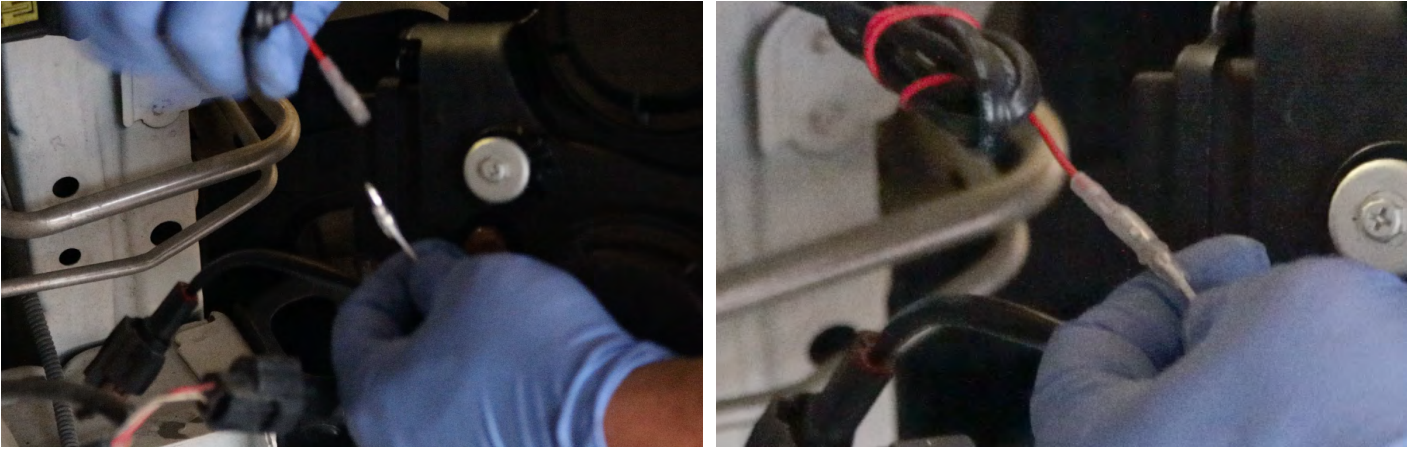
STEP 3. RUN THE DRL HARNESS

Run the DRL harness to the other side of the headlight and secure it into a safe area with a zip tie.

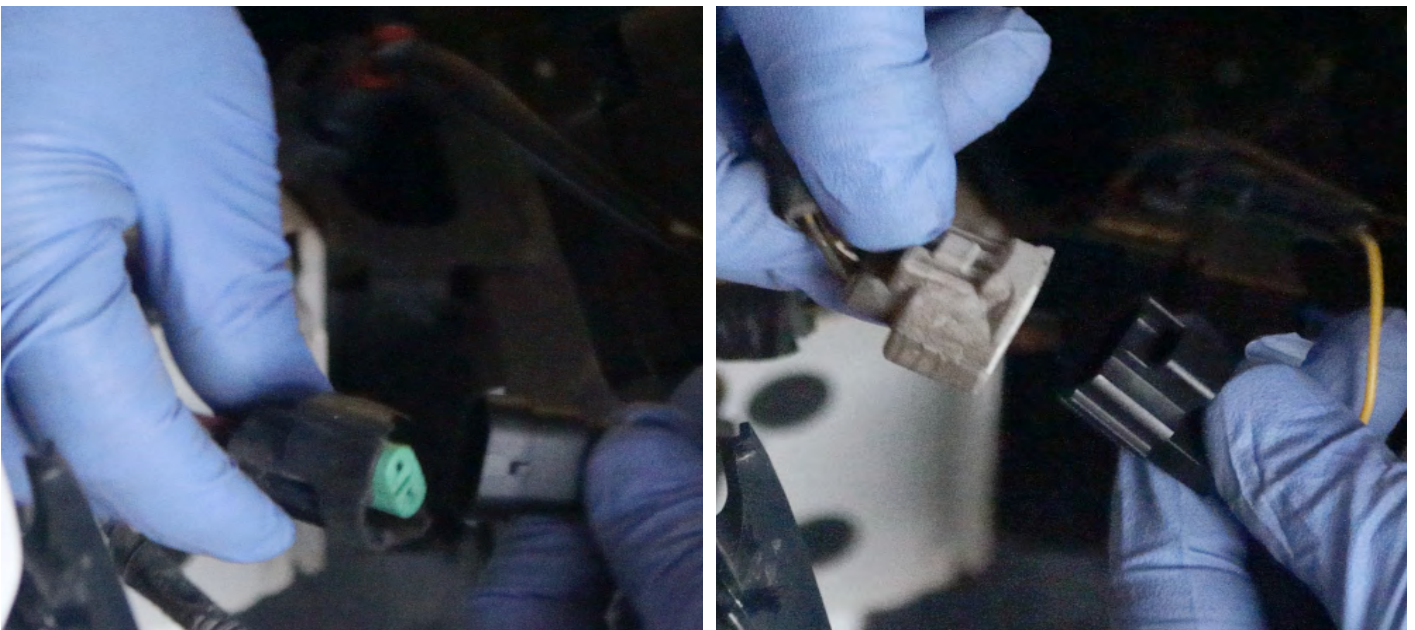


STEP 4. PLUG CONNECTORS INTO THE HEADLIGHT

Plug the DRL red wire into the headlight. **DO NOT USE DIELECTRIC GREASE!**



Plug the light bulb connectors into the headlight. Repeat the same process for the other side.

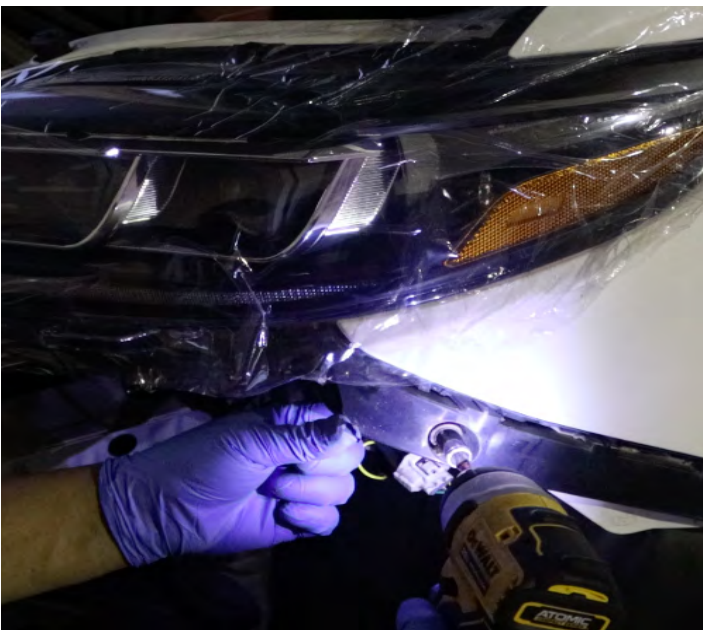


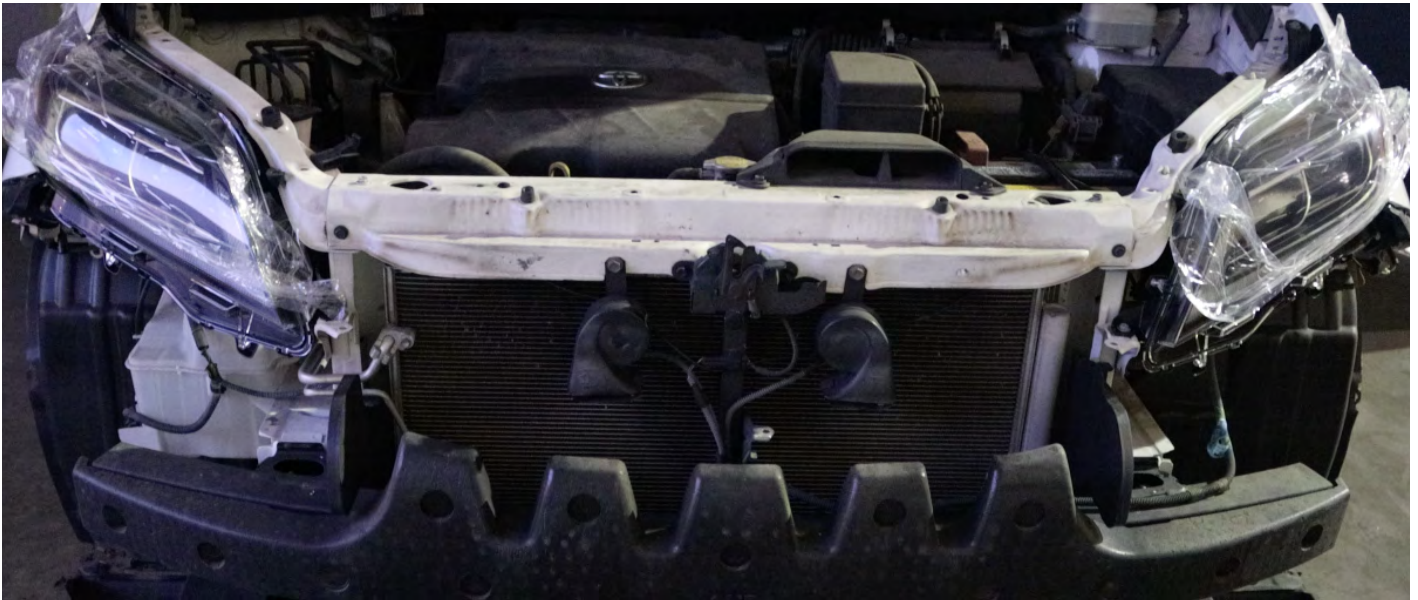
STEP 5. SCREW THE HEADLIGHTS BOLTS

Position the ALPHAREX headlights onto the vehicle and get ready to screw in the headlight bolts.

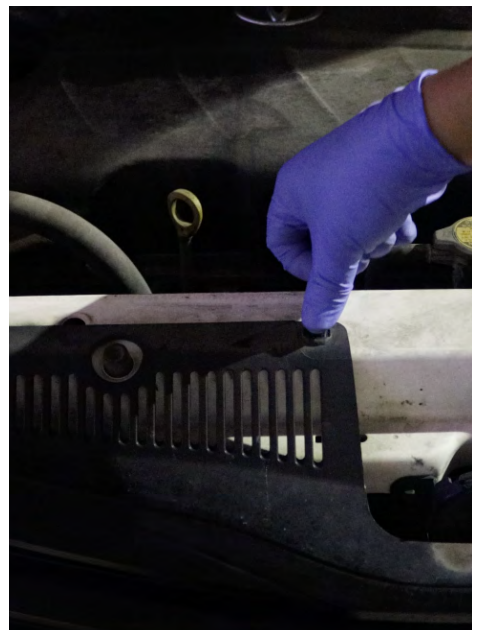
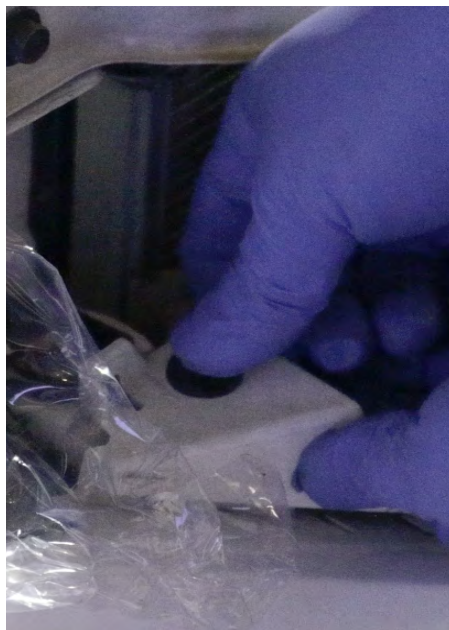


Secure the headlight bolts. Repeat the same process for the other side.





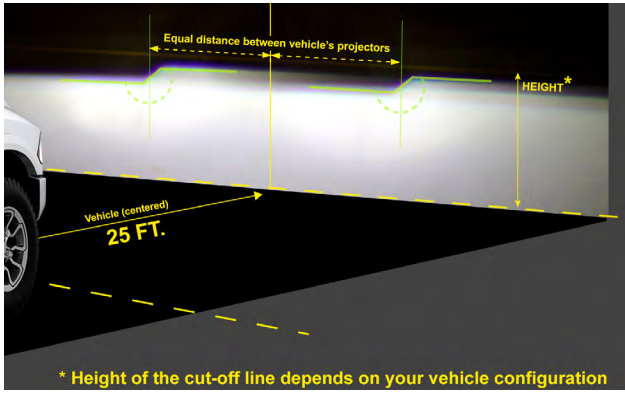
After installing the headlights, reverse the bumper and grille removal process to complete the installation.



STEP 6. ADJUST HEADLIGHT LEVEL

Once everything has been tested, aim your ALPHAREX headlights by parking 25ft from a wall and level the headlight evenly.

Clockwise to lower the level
Counterclockwise to raise the level



STEP 7. COMPLETE INSTALLATION

Congratulations! You have completed the installation for ALPHAREX **11-20 Toyota Sienna HEADLIGHTS**.

